

Focusing on starter feed nutrition can impact the return per pig through better lifetime performance and reduced variation.

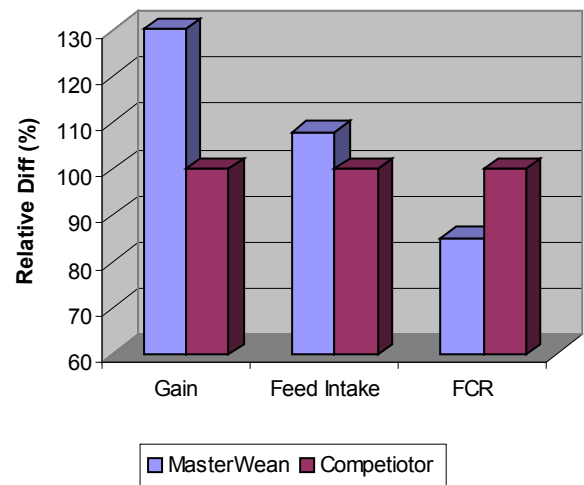
The impact that the post-weaning performance can have on the lifetime of the pig is well documented. Pluske (1995) for example showed that improving ADG in the first 7 days post-weaning reduced subsequent days to slaughter (Table 1).

Table 1. Post-Wean Impact on Lifetime Performance			
ADG g/day(7 days post-wean)	114	161	204
FI g/day (7 days post-wean)	184	206	230
FCR (7 days post-wean)	1.66	1.40	1.14
Days to slaughter	122	119	117

Improving performance immediately post-weaning is also important in reducing the impact of variation that exists from birth. This can in part be achieved by reducing the post-weaning lag and reducing the time the piglets take their first feed. This is especially the case with the bottom 20% of the population in weaning weight and special attention should be focused on this population. Schinkel et al 2002 showed through stochastic modeling that comparing the top 5 percentile group in terms of growth to the bottom 5 percentile there was a predicted 53 day difference in achieving a target weight of 120 kg.

This has an obvious economic impact and so the focus on reducing variation should be important to the modern day producer. It is with this aim that ABNA have focused on starter feed nutrition bringing the producer a product that improves post-weaning performance on a consistent basis when compared to traditional North American type starter feeds.

Fig 1 The impact of MasterWean on performance 8.3 days post-weaning



Trials in both commercial and university environments show that the use of MasterWean starter feeds based on an average of 8.3 days post-weaning improves gain by 130% of competitor, feed intake by 108% and FCR is 85% of competitor feed (Fig 1). For complete trial breakdown see Appendix 1.

It is the focus on starter feed nutrition and management that allows Masterfeeds to work with the producer to address this important area in the production cycle of the pig with the aim to improve the \$ return per pig.

SUMMARY

- The use of a quality starter feed improves the immediate performance post-weaning reducing the impact of the post-weaning lag.
- A better start can lead to not only a better finish but also to a reduced variation at slaughter both important factors in increasing the \$ return per pig to the producer.

Appendix 1

Fig 1 MasterWean Impact on Feed Intake Post Weaning

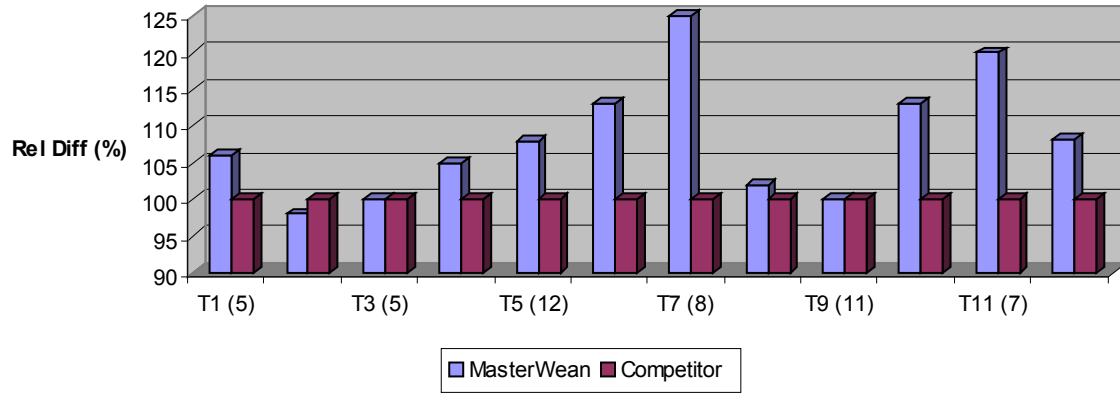


Fig 2 MasterWean Impact on ADG Post Weaning

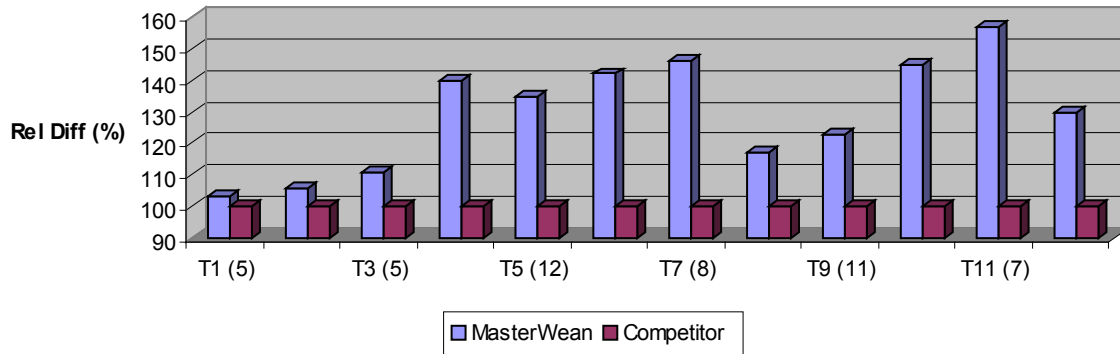


Fig 3 MasterWean Impact on FCR Post Weaning

