

## Flexible feed programs allows MasterWean to meet the needs of the producer.

Most units that Masterfeeds visit differ in their needs when it comes to designing a starter feed program. Some units are focused on a quality performance for a particular feed cost while many others in wean to finish systems believe that the extra growth in the nursery translates into a better finish. This better finish can be measured in different ways from reduced days to slaughter to a greater weight per pig for a specific time period. In addition what is not often taken into account is the reduced variation at slaughter weight that a good nursery program can bring to a production system. This may well mean less light pigs entering the packing plant and so resulting in a greater income for the producer due to fewer cost penalties.

Masterfeeds through a focus on the producers everyday business has a range of products that can meet the varying needs of the modern day producer. These flexible MasterWean programs developed in association with ABNA have been tested against the more fixed traditional competitor starter feed programs with a high degree of success.

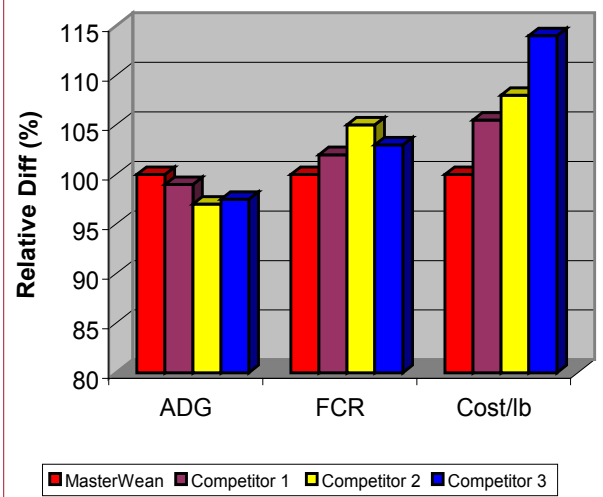
Even though Masterfeeds focus is maximizing the nursery performance with a cost reward in finishing, it is also due to the flexible programming able to deliver an optimal performance at a lower cost per lb gain as shown in this recent review.

A recent review of historical and present day data within a large commercial swine system comparing a MasterWean program compared to competitor programs showed the benefits of the Masterfeeds range of feeds.

When compared to a range of competitor starter feeds used within the North American market the results showed that Masterfeeds delivered on the producers need of greater or similar performance for a lower cost/lb gain (Fig 1).

*Against an average of all three competitors performance MasterWean improved ADG by over 2%, reduced FCR by over 3% while lowering the cost per lb gain by over 9%.*

**Fig 1 The impact of MasterWean relative to three different competitors on nursery performance**



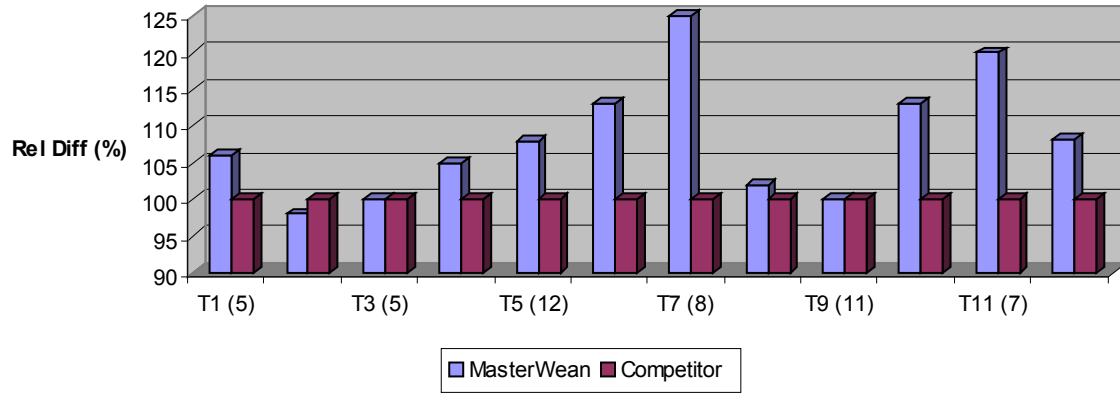
As an example: If these performance benefits are translated into a large-scale production of 2,000 sows with a cost per kg through the nursery of \$0.68 per kg gain then the potential savings to that system could be approximately \$1.20 per pig minus any extra feed cost. In other terms this could mean an extra \$52,800 of potential income per year through using MasterWean. This does not even take into account the improvement in gain seen when using MasterWean that could produce an additional \$38,720 worth of income. This is based on 1 kg of gain at the end of nursery being worth \$2.20 per pig.

### SUMMARY

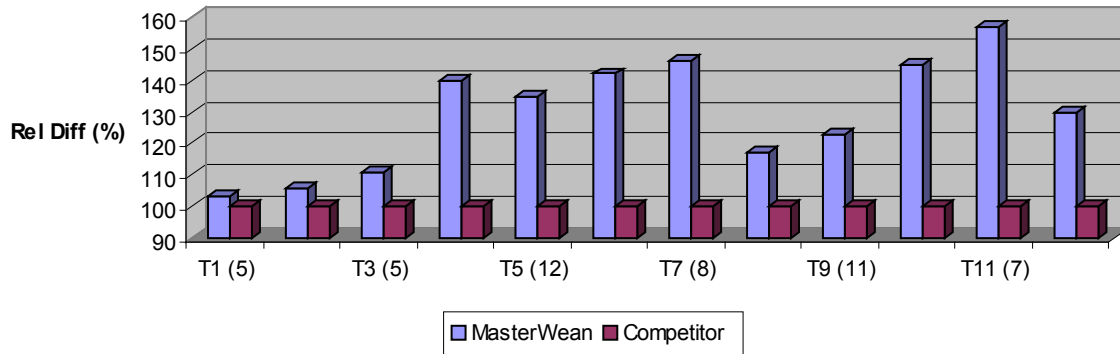
- The use of MasterWean can improve performance (measured over a period of time) while reducing cost per kg when compared to main competitor brands in the market returning the income per pig.
- Flexible programming by MasterWean is a cost effective solution for the Canadian Swine producer.

## Appendix 1

**Fig 1 MasterWean Impact on Feed Intake Post Weaning**



**Fig 2 MasterWean Impact on ADG Post Weaning**



**Fig 3 MasterWean Impact on FCR Post Weaning**

